

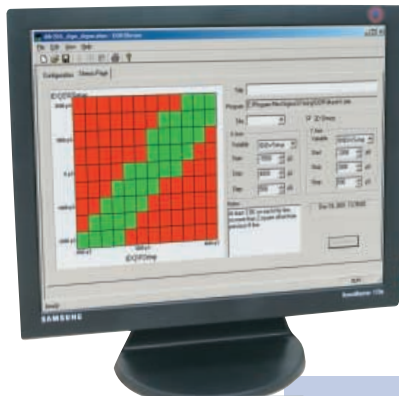
# TANISYS<sup>®</sup> TECHNOLOGY



## Model 600 DDR Memory Test System

## SUPPORT FOR TOMORROW'S TECHNOLOGIES TODAY

The Tanisys® Model 600 is the leading platform for DRAM module test today, offering DDR-II support for modules operating at up to 533MHz. With backwards capability to DDR-I, the Model 600 is the smartest option for leading edge manufacturers of DDR, whether you are an IDM, 3rd party module manufacturer, or DRAM test house.



*Tanisys offers a variety of tools, including Shmoo plotting. Combining these tools with the flexibility of the hardware allows the Model 600 to be your sole platform for engineering, characterization, production, reliability and FA.*



## R&D, PRODUCTION OR FAILURE ANALYSIS

The Model 600 is ready for your needs, regardless of the application. For R&D and FA environments, the single-site Model 600 is a desktop system utilizing the same hardware and software as the larger production model. Configure the Model 600 with the optional engineering tools such as Shmoo plot, Auto-ID and Auto-Margin, and you have a powerful engineering development system. For production, configure the chassis from 1-16 test heads for the highest throughput at-speed solution available in the world.

## PRODUCTION READY

The Model 600 was built from the ground-up to support automated environments. Choose your own handler or ask Tanisys to provide the full solution. Tanisys has the capability to provide a full turnkey system if requested. For those customers that prefer to go without automation, the Model 600 can easily be configured to support manual environments with LED lights at each DUT site. Whatever your plan for production, the Model 600 is ready and backed by Tanisys expertise through our successful installed base.

## WORLDWIDE SUPPORT NETWORK

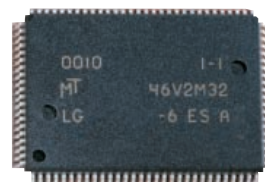
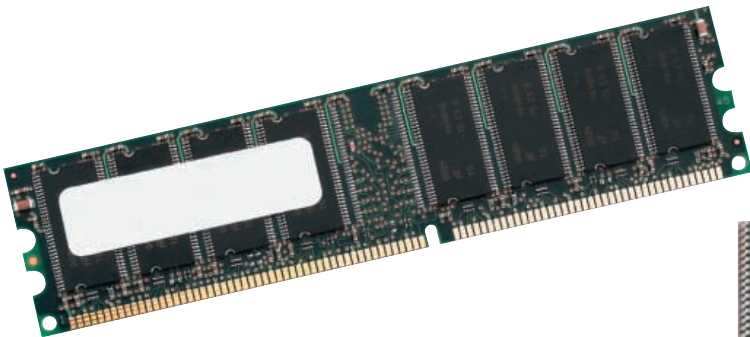
Through strategic partnerships in Korea, Japan, Taiwan, China, Singapore and Europe, Tanisys covers the world. Tanisys is unique in this industry by not only providing sales and distribution, but also offering full technical support and applications engineering around the globe. Our customers need to receive technical support in any of their locations worldwide, so Tanisys has responded with an increased presence around the world. By offering world-class regional support, customers outside the U.S. receive the same hands-on support that customers in North America receive.



## THE LEADER IN DRAM MODULE TEST

The Model 600 from Tanisys is the latest generation of test equipment released by Tanisys Technology. Tanisys has been providing test equipment under the DarkHorse Systems® brand name for over 12 years. These systems have continued to lead the industry, with other competitors coming and going throughout the years. Tanisys Technology/DarkHorse Systems is the longest standing builder of memory module test equipment in the world, with over 3,500 systems installed worldwide.

The Model 600 hardware is not only powerful, it is robust. Built on over 12 years of experience in the memory test business, the Model 600 uses proven hardware and memory test experience, resulting in extremely low failure rates. The mean time between failure (MTBF) is the highest available, resulting in less downtime, more uptime, and an overall cost of test that is the lowest for high performance module test solutions.



## FEATURES

- Support for true at-speed testing of DDR-I & DDR-II modules and devices up to 533 MHz
- Powerful development tools, including Shmoo Plotting, Bitmap and Scripting available
- Quickly set-up any memory configuration using Auto-ID, Auto-Timing, and Auto-Margin tools
- Full support of SPD programming including serialization, bar code support, and multiple SPDs per module
- Open environment, including all algorithm source code, device libraries, a/c timings, and voltages
- Model 600 single-site for desktop or Model 616 production system, field-upgradeable from 1-16 sites, for manual test or automation
- Support for data collection, including virtual & physical binning and reporting
- Suite of memory algorithms provided, custom algorithms available
- Worldwide support, including local applications engineering and on-site spares support
- Remote tech support via dial-in or internet



## Contact Tanisys for more information.

On the web: [www.tanisys.com](http://www.tanisys.com)

Toll-free phone: 800-533-1744

International/direct: 01 512-335-4440

©2004 Tanisys Technology, Inc. all rights reserved. Tanisys, the Tanisys logo and DarkHorse Systems are Trademarks of Tanisys Technology, Inc. All other names are property of their respective owners.